

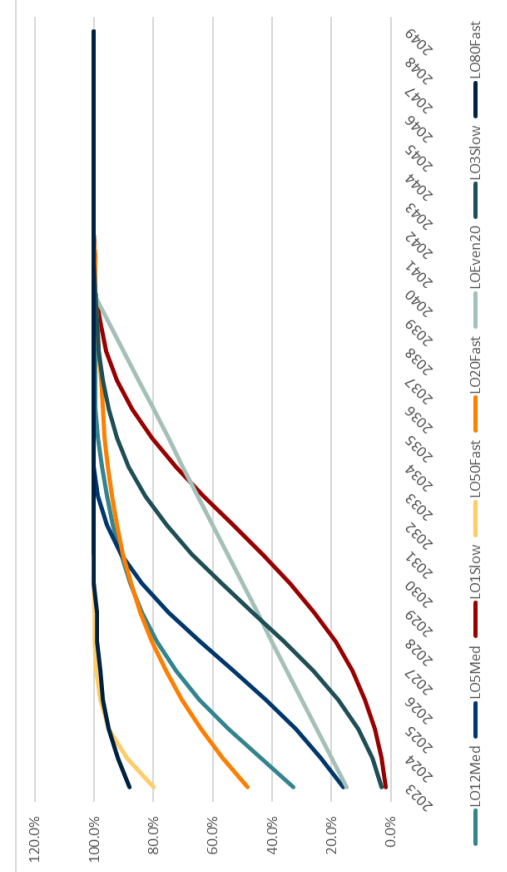
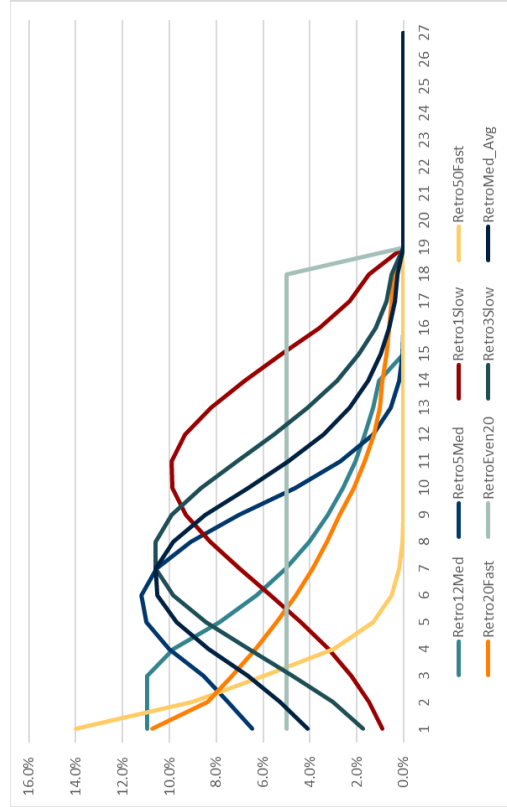
Appendix D

Demand Side Management

2025 WA IRP

Key	2023	2024	2025	2026	2027	2028	2029	2030	2031	2032	2033	2034	2035	2036	2037	2038	2039	2040	2041	2042	2043	2044	2045	2046	2047	2048	2049				
LO12Med	32.8%	43.7%	54.7%	64.5%	72.4%	78.7%	83.7%	87.8%	91.0%	93.6%	95.6%	97.3%	98.6%	99.7%	99.7%	99.7%	99.7%	99.7%	99.7%	100.0%	100.0%	100.0%	100.0%	100.0%	100.0%	100.0%	100.0%	100.0%			
LO5Med	16.0%	23.5%	32.1%	42.1%	53.1%	64.3%	74.8%	83.9%	90.9%	95.8%	98.7%	100.0%	100.0%	100.0%	100.0%	100.0%	100.0%	100.0%	100.0%	100.0%	100.0%	100.0%	100.0%	100.0%	100.0%	100.0%	100.0%	100.0%	100.0%		
LO1Slow	1.7%	3.2%	5.4%	8.6%	13.0%	18.7%	25.7%	34.0%	43.3%	53.1%	61.1%	72.4%	80.6%	87.3%	92.3%	96.0%	98.0%	99.6%	99.6%	100.0%	100.0%	100.0%	100.0%	100.0%	100.0%	100.0%	100.0%	100.0%	100.0%		
LO50Fast	80.0%	89.0%	95.0%	97.9%	99.3%	99.8%	100.0%	100.0%	100.0%	100.0%	100.0%	100.0%	100.0%	100.0%	100.0%	100.0%	100.0%	100.0%	100.0%	100.0%	100.0%	100.0%	100.0%	100.0%	100.0%	100.0%	100.0%	100.0%	100.0%		
LO20Fast	48.4%	56.7%	64.0%	70.4%	75.8%	80.4%	84.3%	87.6%	90.3%	92.4%	94.1%	95.4%	96.4%	97.1%	97.7%	98.4%	98.9%	99.6%	99.6%	100.0%	100.0%	100.0%	100.0%	100.0%	100.0%	100.0%	100.0%	100.0%	100.0%		
LOEven20	15.0%	20.0%	25.0%	30.0%	35.0%	40.0%	45.0%	50.0%	55.0%	60.0%	65.0%	70.0%	75.0%	80.0%	85.0%	90.0%	95.0%	100.0%	100.0%	100.0%	100.0%	100.0%	100.0%	100.0%	100.0%	100.0%	100.0%	100.0%	100.0%		
LO3Slow	3.2%	6.2%	10.9%	17.6%	26.0%	35.8%	46.4%	57.0%	66.9%	75.6%	82.7%	88.3%	92.3%	95.2%	97.1%	98.3%	99.1%	99.6%	100.0%	100.0%	100.0%	100.0%	100.0%	100.0%	100.0%	100.0%	100.0%	100.0%	100.0%		
LO8Fast	88.0%	92.0%	95.0%	97.0%	98.0%	99.0%	99.0%	100.0%	100.0%	100.0%	100.0%	100.0%	100.0%	100.0%	100.0%	100.0%	100.0%	100.0%	100.0%	100.0%	100.0%	100.0%	100.0%	100.0%	100.0%	100.0%	100.0%	100.0%	100.0%		
Retro2Med	10.9%	10.9%	10.9%	9.8%	7.9%	6.3%	5.0%	4.0%	3.2%	2.6%	2.1%	1.7%	1.3%	1.1%	0.0%	0.0%	0.0%	0.0%	0.0%	0.0%	0.0%	0.0%	0.0%	0.0%	0.0%	0.0%	0.0%	0.0%	0.0%		
Retro5Med	6.5%	7.5%	8.6%	10.0%	11.0%	11.2%	10.6%	9.1%	7.0%	4.7%	2.7%	1.3%	0.8%	0.2%	0.1%	0.0%	0.0%	0.0%	0.0%	0.0%	0.0%	0.0%	0.0%	0.0%	0.0%	0.0%	0.0%	0.0%	0.0%		
RetroSlow	0.9%	1.5%	2.2%	3.2%	4.4%	5.7%	7.0%	8.3%	9.3%	9.9%	9.9%	9.4%	8.2%	6.8%	5.2%	3.6%	2.3%	1.5%	0.0%	0.0%	0.0%	0.0%	0.0%	0.0%	0.0%	0.0%	0.0%	0.0%	0.0%	0.0%	
Retro50Fast	14.0%	9.0%	6.0%	3.0%	1.3%	0.5%	0.2%	0.1%	0.0%	0.0%	0.0%	0.0%	0.0%	0.0%	0.0%	0.0%	0.0%	0.0%	0.0%	0.0%	0.0%	0.0%	0.0%	0.0%	0.0%	0.0%	0.0%	0.0%	0.0%	0.0%	
Retro20Fast	10.7%	8.4%	7.3%	6.3%	5.4%	4.6%	3.9%	3.3%	2.7%	2.1%	1.7%	1.3%	1.0%	0.9%	0.7%	0.6%	0.5%	0.4%	0.0%	0.0%	0.0%	0.0%	0.0%	0.0%	0.0%	0.0%	0.0%	0.0%	0.0%	0.0%	
RetroEven20	5.0%	5.0%	5.0%	5.0%	5.0%	5.0%	5.0%	5.0%	5.0%	5.0%	5.0%	5.0%	5.0%	5.0%	5.0%	5.0%	5.0%	5.0%	5.0%	5.0%	5.0%	5.0%	5.0%	5.0%	5.0%	5.0%	5.0%	5.0%	5.0%	5.0%	
Retro3Slow	1.7%	3.0%	4.7%	6.6%	8.4%	9.8%	10.6%	10.6%	10.6%	9.8%	8.7%	7.1%	5.5%	4.1%	2.9%	1.9%	1.2%	0.7%	0.5%	0.0%	0.0%	0.0%	0.0%	0.0%	0.0%	0.0%	0.0%	0.0%	0.0%	0.0%	0.0%
RetroMed_Avg	4.1%	5.3%	6.6%	8.3%	9.7%	10.5%	10.6%	9.8%	8.5%	6.7%	4.9%	3.4%	2.3%	1.5%	1.0%	0.6%	0.4%	0.3%	0.0%	0.0%	0.0%	0.0%	0.0%	0.0%	0.0%	0.0%	0.0%	0.0%	0.0%	0.0%	

Ramp Rates from the NWPCC's 8th Plan



Residential DSM Forecast Highlights

Summary of Energy Savings (MM therms), Selected Years	2024	2025	2030	2035	2045
Baseline Forecast (MMtherms)	123	113	103	91	76
Cumulative Savings (MMtherms)					
Achievable Economic TRC Potential	0.317	0.632	3.123	6.166	10.060
Achievable Economic UCT Potential	0.490	0.988	4.859	9.562	15.671
Achievable Technical Potential	0.565	1.135	5.626	11.158	17.691
Technical Potential	3.079	5.712	19.087	29.633	39.240
Energy Savings (% of Baseline)					
Achievable Economic TRC Potential	0.3%	0.6%	3.0%	6.7%	13.3%
Achievable Economic UCT Potential	0.4%	0.9%	4.7%	10.5%	20.7%
Achievable Technical Potential	0.5%	1.0%	5.5%	12.2%	23.4%
Technical Potential	2.5%	5.1%	18.5%	32.4%	51.9%
Incremental Savings (MMtherms)					
Achievable Economic TRC Potential	0.317	0.341	0.616	0.649	0.249
Achievable Economic UCT Potential	0.490	0.535	0.952	1.030	0.388
Achievable Technical Potential	0.810	0.888	1.562	1.736	0.947
Technical Potential	3.079	2.857	2.719	2.262	0.977

Commercial DSM Forecast Highlights

Summary of Energy Savings (MM therms), Selected Years	2024	2025	2030	2035	2045
Baseline Forecast (MMtherms)	87	80	69	58	45
Cumulative Savings (MMtherms)					
Achievable Economic TRC Potential	0.323	0.679	3.249	5.027	5.578
Achievable Economic UCT Potential	0.361	0.733	3.219	5.005	5.747
Achievable Technical Potential	1.066	2.071	6.934	9.392	9.789
Technical Potential	1.461	2.814	9.534	12.823	13.744
Energy Savings (% of Baseline)					
Achievable Economic TRC Potential	0.4%	0.9%	4.7%	8.7%	12.3%
Achievable Economic UCT Potential	0.4%	0.9%	4.7%	8.6%	12.7%
Achievable Technical Potential	1.2%	2.6%	10.0%	16.2%	21.6%
Technical Potential	1.7%	3.5%	13.8%	22.1%	30.3%
Incremental Savings (MMtherms)					
Achievable Economic TRC Potential	0.323	0.381	0.581	0.353	0.173
Achievable Economic UCT Potential	0.361	0.401	0.555	0.373	0.184
Achievable Technical Potential	1.144	1.160	1.141	0.674	0.291
Technical Potential	1.461	1.459	1.349	0.772	0.348

Industrial DSM Forecast Highlights

Summary of Energy Savings (MM therms), Selected Years	2024	2025	2030	2035	2045
Baseline Forecast (MMtherms)	21	21	25	26	27
Cumulative Savings (MMtherms)					
Achievable Economic TRC Potential	0.069	0.142	0.669	1.138	1.520
Achievable Economic UCT Potential	0.069	0.141	0.663	1.128	1.523
Achievable Technical Potential	0.077	0.157	0.734	1.241	1.658
Technical Potential	0.094	0.191	0.903	1.495	1.963
Energy Savings (% of Baseline)					
Achievable Economic TRC Potential	0.3%	0.7%	2.7%	4.4%	5.5%
Achievable Economic UCT Potential	0.3%	0.7%	2.7%	4.4%	5.5%
Achievable Technical Potential	0.4%	0.8%	3.0%	4.8%	6.0%
Technical Potential	0.5%	0.9%	3.7%	5.8%	7.1%
Incremental Savings (MMtherms)					
Achievable Economic TRC Potential	0.069	0.074	0.118	0.089	0.021
Achievable Economic UCT Potential	0.069	0.073	0.115	0.088	0.023
Achievable Technical Potential	0.077	0.082	0.128	0.098	0.024
Technical Potential	0.094	0.099	0.153	0.115	0.030

Scenario Comparison

Scenario	Group	Sector	Sum of 2025	Sum of 2030	Sum of 2035	Sum of 2040	Sum of 2045
2023 Original	Regular Income	Residential	341.4	1,863.5	4,264.8	6,520.1	8,036.8
	Moderate Income	Residential	595.2	2,784.3	5,248.5	7,137.4	7,962.4
	Low Income	Residential	33.2	193.6	457.5	688.8	826.5
	Commercial	Commercial	670.3	3,128.5	5,099.4	5,979.6	6,128.6
	Industrial	Industrial	142.1	614.2	1,057.7	1,326.2	1,429.9
2023 Original Total			1,782.2	8,584.1	16,127.9	21,652.0	24,384.3
Reference - 2025 IRP	Regular Income	Residential	347.5	1,863.1	4,071.9	6,122.2	7,425.5
	Moderate Income	Residential	592.1	2,736.1	4,924.3	6,623.0	7,264.2
	Low Income	Residential	48.5	259.3	565.4	831.9	981.1
	Commercial	Commercial	733.0	3,219.1	5,005.3	5,728.6	5,747.3
	Industrial	Industrial	141.3	663.1	1,127.8	1,409.9	1,523.4
Reference - 2025 IRP Total			1,862.4	8,740.8	15,694.8	20,715.6	22,941.6
Low Growth	Regular Income	Residential	346.3	1,833.6	3,987.9	5,968.7	7,196.6
	Moderate Income	Residential	589.5	2,690.8	4,824.1	6,459.6	7,054.0
	Low Income	Residential	48.3	255.6	554.4	811.8	951.6
	Commercial	Commercial	734.6	3,259.2	5,057.3	5,753.5	5,748.6
	Industrial	Industrial	141.5	600.6	1,011.0	1,253.3	1,341.2
Low Growth Total			1,860.2	8,639.9	15,434.6	20,246.9	22,291.9
High Growth	Regular Income	Residential	347.5	1,895.0	4,183.0	6,337.4	7,761.7
	Moderate Income	Residential	592.1	2,781.2	5,049.1	6,842.0	7,573.7
	Low Income	Residential	48.5	263.4	580.2	860.5	1,025.0
	Commercial	Commercial	734.5	3,303.7	5,184.0	5,961.8	6,018.8
	Industrial	Industrial	141.3	663.1	1,127.8	1,409.9	1,523.4
High Growth Total			1,864.0	8,906.4	16,124.2	21,411.5	23,902.7

Residential High Growth Scenario

Summary of Energy Savings (MM therms), Selected Years	2024	2025	2030	2035	2045
Baseline Forecast (MMtherms)	123	113	104	94	81
Cumulative Savings (MMtherms)					
Achievable Economic TRC Potential	0.317	0.632	3.165	6.294	10.438
Achievable Economic UCT Potential	0.490	0.988	4.940	9.812	16.360
Achievable Technical Potential	0.565	1.136	5.714	11.435	18.445
Technical Potential	3.080	5.713	19.320	30.192	40.423
Energy Savings (% of Baseline)					
Achievable Economic TRC Potential	0.3%	0.6%	3.0%	6.7%	12.8%
Achievable Economic UCT Potential	0.4%	0.9%	4.7%	10.4%	20.1%
Achievable Technical Potential	0.5%	1.0%	5.5%	12.2%	22.7%
Technical Potential	2.5%	5.1%	18.5%	32.1%	49.7%
Incremental Savings (MMtherms)					
Achievable Economic TRC Potential	0.317	0.341	0.630	0.669	0.278
Achievable Economic UCT Potential	0.490	0.535	0.978	1.070	0.436
Achievable Technical Potential	0.810	0.888	1.595	1.787	1.005
Technical Potential	3.080	2.857	2.786	2.330	1.023

Residential Low Growth Scenario

Summary of Energy Savings (MM therms), Selected Years		2024	2025	2030	2035	2045
Baseline Forecast (MMtherms)		123	113	102	89	72
Cumulative Savings (MMtherms)						
Achievable Economic TRC Potential		0.317	0.629	3.082	6.070	9.809
Achievable Economic UCT Potential		0.490	0.984	4.780	9.366	15.202
Achievable Technical Potential		0.565	1.131	5.540	10.941	17.176
Technical Potential		3.080	5.689	18.827	29.149	38.454
Energy Savings (% of Baseline)						
Achievable Economic TRC Potential		0.3%	0.6%	3.0%	6.8%	13.7%
Achievable Economic UCT Potential		0.4%	0.9%	4.7%	10.5%	21.2%
Achievable Technical Potential		0.5%	1.0%	5.4%	12.3%	24.0%
Technical Potential		2.5%	5.0%	18.5%	32.7%	53.7%
Incremental Savings (MMtherms)						
Achievable Economic TRC Potential		0.317	0.339	0.607	0.636	0.234
Achievable Economic UCT Potential		0.490	0.531	0.933	1.003	0.360
Achievable Technical Potential		0.810	0.883	1.539	1.701	0.912
Technical Potential		3.080	2.833	2.671	2.214	0.959

Commercial High Growth Scenario

Summary of Energy Savings (MM therms), Selected Years		2024	2025	2030	2035	2045
Baseline Forecast (MMtherms)		87	80	70	60	49
Cumulative Savings (MMtherms)						
Achievable Economic TRC Potential		0.324	0.680	3.332	5.201	5.843
Achievable Economic UCT Potential		0.361	0.735	3.304	5.184	6.019
Achievable Technical Potential		1.069	2.079	7.140	9.861	10.455
Technical Potential		1.465	2.823	9.781	13.375	14.520
Energy Savings (% of Baseline)						
Achievable Economic TRC Potential		0.4%	0.9%	4.8%	8.6%	12.0%
Achievable Economic UCT Potential		0.4%	0.9%	4.7%	8.6%	12.3%
Achievable Technical Potential		1.2%	2.6%	10.2%	16.3%	21.4%
Technical Potential		1.7%	3.5%	13.9%	22.1%	29.7%
Incremental Savings (MMtherms)						
Achievable Economic TRC Potential		0.324	0.382	0.603	0.363	0.191
Achievable Economic UCT Potential		0.361	0.402	0.577	0.383	0.202
Achievable Technical Potential		1.148	1.164	1.171	0.689	0.310
Technical Potential		1.465	1.463	1.386	0.790	0.370

Commercial Low Growth Scenario

Summary of Energy Savings (MM therms), Selected Years		2024	2025	2030	2035	2045
Baseline Forecast (MMtherms)		87	80	69	59	46
Cumulative Savings (MMtherms)						
Achievable Economic TRC Potential		0.324	0.680	3.288	5.075	5.574
Achievable Economic UCT Potential		0.361	0.735	3.259	5.057	5.749
Achievable Technical Potential		1.069	2.079	7.094	9.728	10.175
Technical Potential		1.465	2.823	9.704	13.194	14.194
Energy Savings (% of Baseline)						
Achievable Economic TRC Potential		0.4%	0.9%	4.7%	8.6%	12.2%
Achievable Economic UCT Potential		0.4%	0.9%	4.7%	8.6%	12.6%
Achievable Technical Potential		1.2%	2.6%	10.2%	16.5%	22.3%
Technical Potential		1.7%	3.5%	14.0%	22.4%	31.1%
Incremental Savings (MMtherms)						
Achievable Economic TRC Potential		0.324	0.382	0.588	0.346	0.163
Achievable Economic UCT Potential		0.361	0.402	0.562	0.366	0.174
Achievable Technical Potential		1.148	1.164	1.156	0.671	0.281
Technical Potential		1.465	1.463	1.365	0.768	0.336

Industrial High Growth Scenario

Summary of Energy Savings (MM therms), Selected Years		2024	2025	2030	2035	2045
Baseline Forecast (MMtherms)		21	21	25	26	27
Cumulative Savings (MMtherms)						
Achievable Economic TRC Potential		0.069	0.142	0.669	1.138	1.520
Achievable Economic UCT Potential		0.069	0.141	0.663	1.128	1.523
Achievable Technical Potential		0.077	0.157	0.734	1.241	1.658
Technical Potential		0.094	0.191	0.903	1.495	1.963
Energy Savings (% of Baseline)						
Achievable Economic TRC Potential		0.3%	0.7%	2.7%	4.4%	5.5%
Achievable Economic UCT Potential		0.3%	0.7%	2.7%	4.4%	5.5%
Achievable Technical Potential		0.4%	0.8%	3.0%	4.8%	6.0%
Technical Potential		0.5%	0.9%	3.7%	5.8%	7.1%
Incremental Savings (MMtherms)						
Achievable Economic TRC Potential		0.069	0.074	0.118	0.089	0.021
Achievable Economic UCT Potential		0.069	0.073	0.115	0.088	0.023
Achievable Technical Potential		0.077	0.082	0.128	0.098	0.024
Technical Potential		0.094	0.099	0.153	0.115	0.030

Industrial Low Growth Scenario

Summary of Energy Savings (MM therms), Selected Years		2024	2025	2030	2035	2045
Baseline Forecast (MMtherms)		21	21	22	23	23
Cumulative Savings (MMtherms)						
Achievable Economic TRC Potential		0.069	0.142	0.609	1.022	1.339
Achievable Economic UCT Potential		0.069	0.141	0.601	1.011	1.341
Achievable Technical Potential		0.077	0.157	0.666	1.112	1.458
Technical Potential		0.094	0.191	0.804	1.328	1.715
Energy Savings (% of Baseline)						
Achievable Economic TRC Potential		0.3%	0.7%	2.8%	4.5%	5.7%
Achievable Economic UCT Potential		0.3%	0.7%	2.7%	4.4%	5.7%
Achievable Technical Potential		0.4%	0.8%	3.0%	4.9%	6.2%
Technical Potential		0.5%	0.9%	3.7%	5.8%	7.3%
Incremental Savings (MMtherms)						
Achievable Economic TRC Potential		0.069	0.074	0.105	0.080	0.019
Achievable Economic UCT Potential		0.069	0.073	0.102	0.079	0.020
Achievable Technical Potential		0.077	0.082	0.114	0.088	0.021
Technical Potential		0.094	0.099	0.136	0.104	0.025

